

Registreringer av

# “Ruinerne av Maridalens Kirke”

*September 1913*

Tegninger av

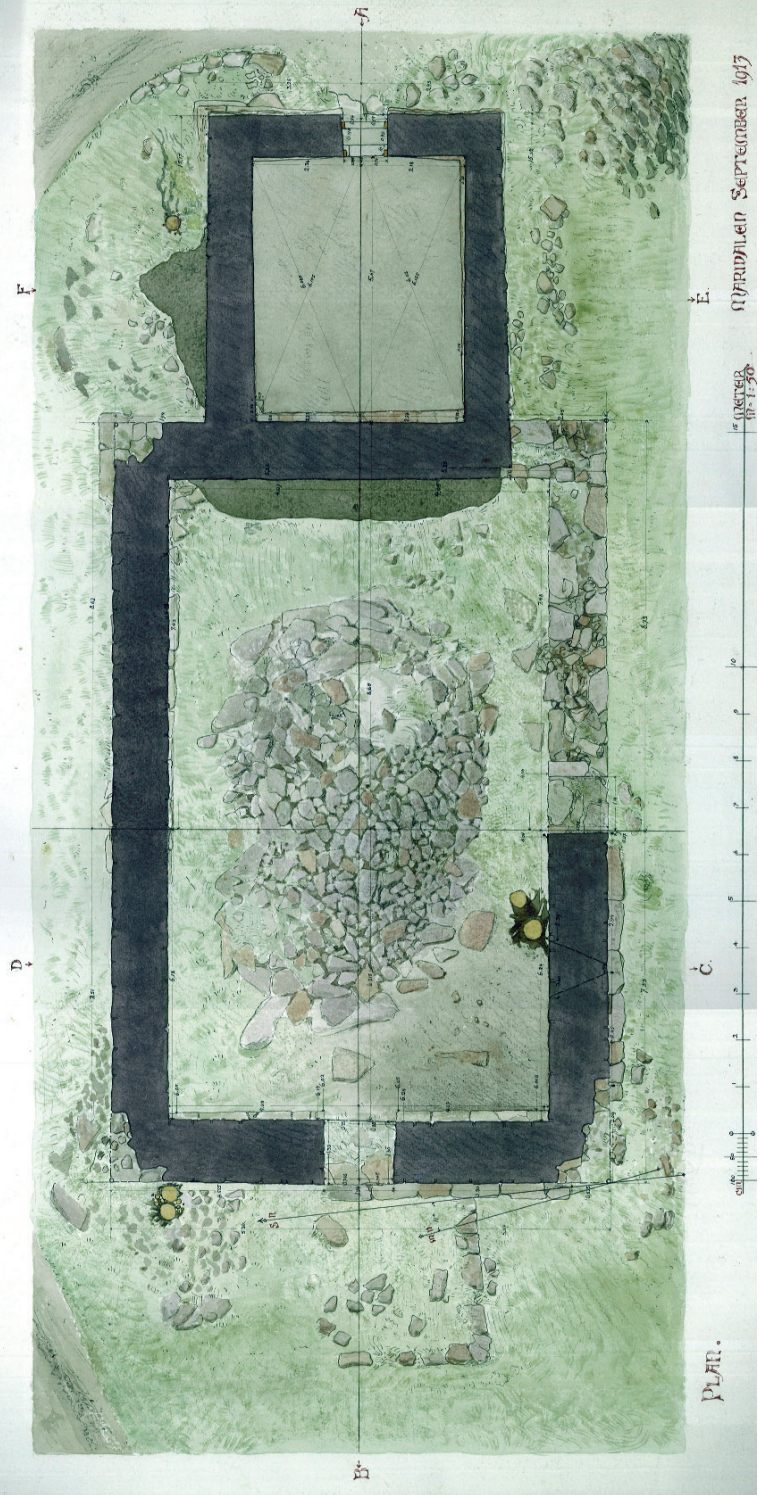
**Gerhard Fischer**



L<sup>n</sup>o I.

Bl. 2.

# ROINERNE AV SANDALENS KIRKE



PLAN.

18 OKT. 1890  
M. FRIDLIEN SEPTEMBER 1917



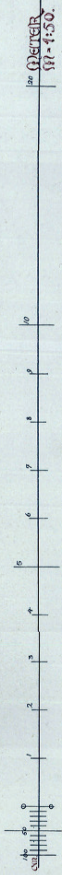
Lr<sup>o</sup> I.

Bl. 3.

RÖMERSKA  
AV  
GÅRDALENS KIRKE



FACIEN mot Syd.

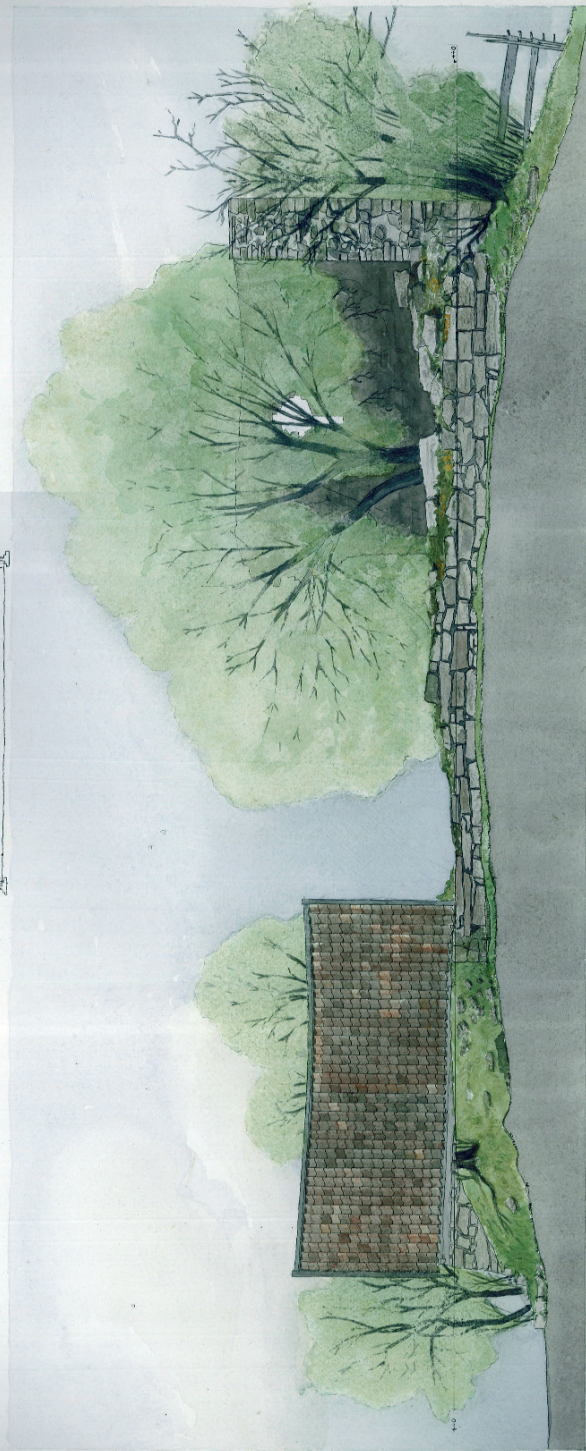
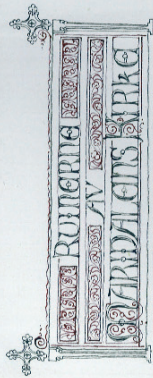


GÅRDALLEN SEPTEMBER 1917.

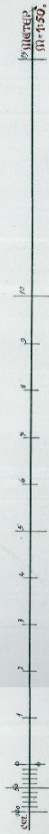


Lng L.

Bl. 4.



FACADE mot NORD.



MARGARETA SEPTEMBER 1913.



L. N<sup>o</sup> I.

RINGRING  
AV  
SRARDALENS  
PARK

Bl. 5.



FACADE mot VEST.

0 1 2 3 4 5 6 7 8 9 10



FACADE mot ØST.

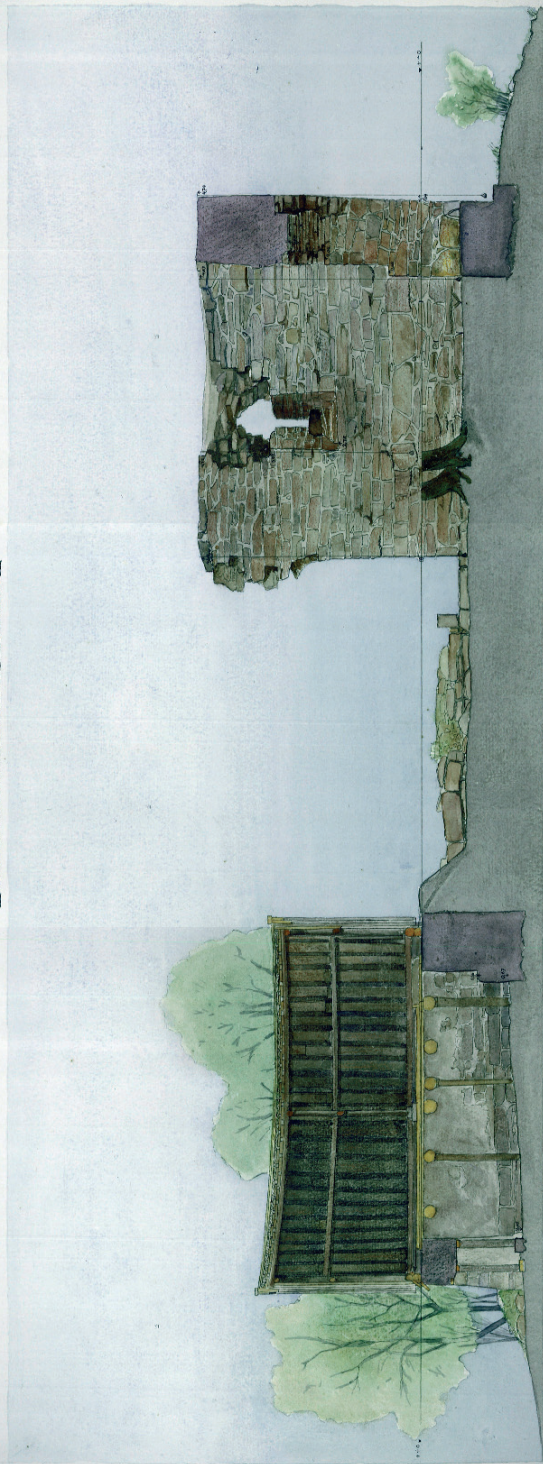
0 1 2 3 4 5 6 7 8 9 10



Lit. I

Bl. 6.

ROMERNE  
AV  
GARDALENS KIRKE



Snit A-B.

1/2 Meter  
0-150

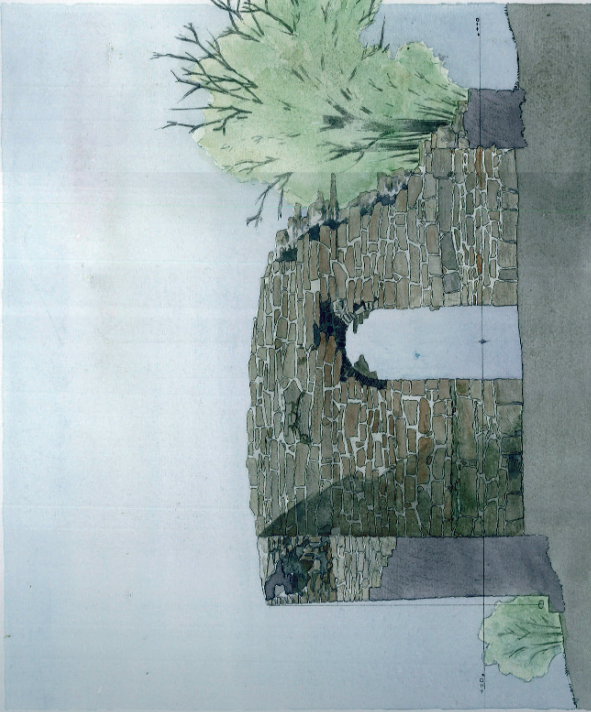
Nordtjen September 1917



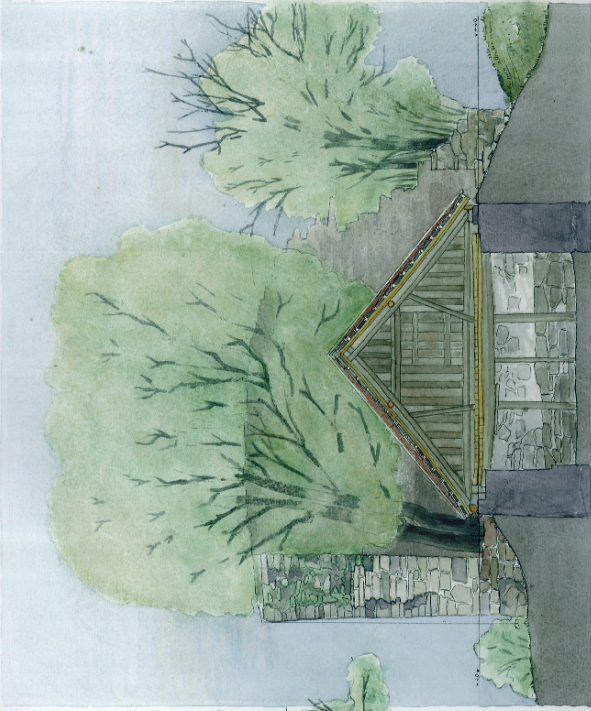
L. n<sup>o</sup> I.



Bl. 7.



Smit C-D.



Smit E-F.

100  
METER  
50-150.

